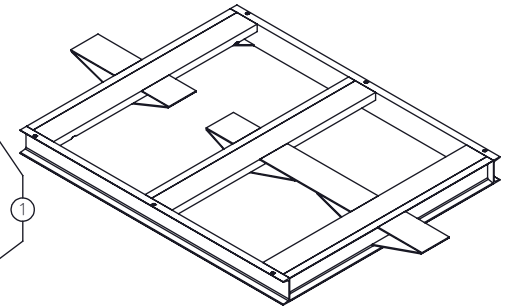
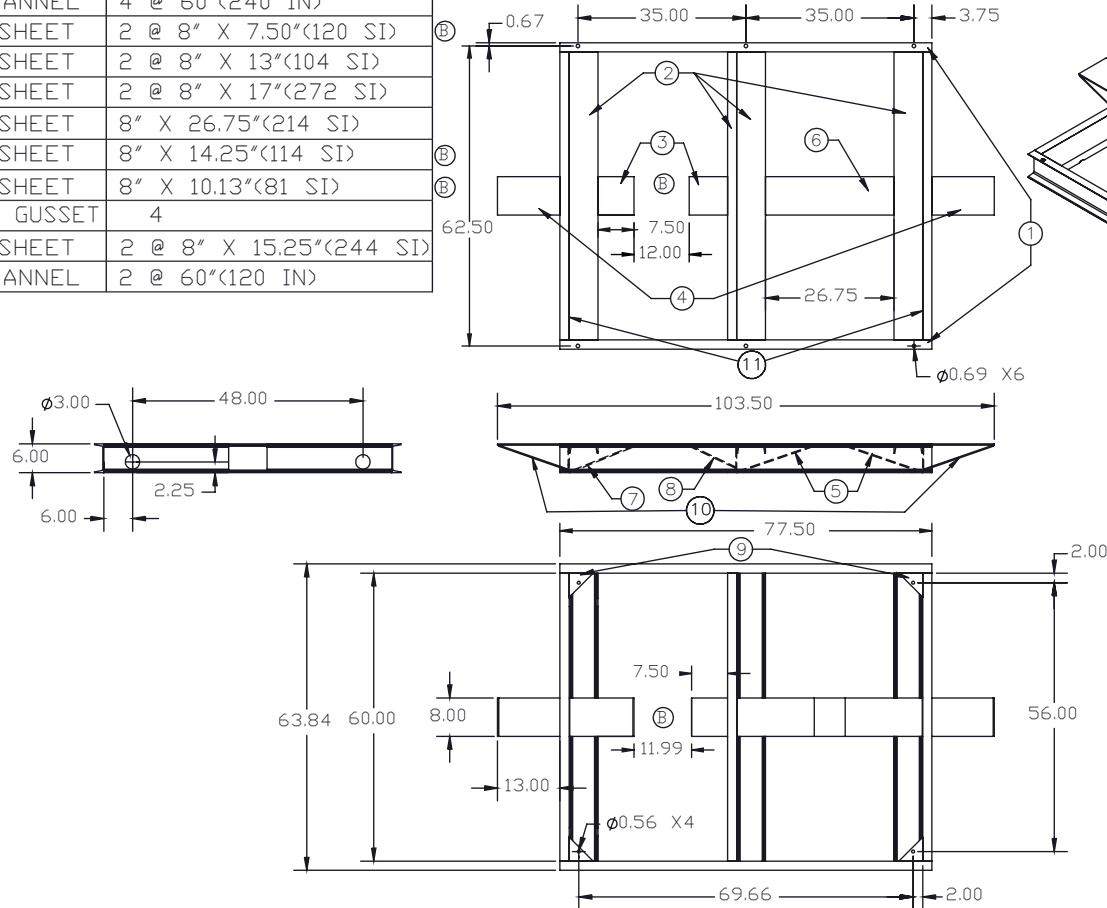


Copyright. All information furnished within this document, electronic file or design correspondence is the property of Den Hartog industries, Inc. and shall not be used, disclosed to others or copied without the expressed written consent of Den Hartog Industries, Inc.

KEY	PART NUMBER	MATERIAL	DESCRIPTION	QTY.
1	FS1300-SK-1	C06X82	6" CHANNEL	2 @ 77.50"(155 IN)
2	FS1300-SK-2	C06X82	6" CHANNEL	4 @ 60"(240 IN)
3	FS1300-SK-3	S-2500	1/4" SHEET	2 @ 8" X 7.50"(120 SI)
4	FS1300-SK-4	S-2500	1/4" SHEET	2 @ 8" X 13"(104 SI)
5	FS1300-SK-5	S-2500	1/4" SHEET	2 @ 8" X 17"(272 SI)
6	FS1300-SK-6	S-2500	1/4" SHEET	8" X 26.75"(214 SI)
7	FS1300-SK-7	S-2500	1/4" SHEET	8" X 14.25"(114 SI)
8	FS1300-SK-8	S-2500	1/4" SHEET	8" X 10.13"(81 SI)
9	12411	S-2500	5 X 5 GUSSET	4
10	FS1300-SK-10	S-2500	1/4" SHEET	2 @ 8" X 15.25"(244 SI)
11	FS1300-SK-11	C06X82	6" CHANNEL	2 @ 60"(120 IN)

©



C	COMPONENT INFORMATION ADDED TO TABLE. DRAWING TEMPLATE UPDATED.	ADH 3/27/09	1828	DRAWN / DATE DHJ 12/17/04	MATERIAL
B	INCREASED SUMP CLEARANCE	DHJ 11/2/07		APPRD. / DATE REH /12/18/04	
A	ADDED BILL OF MATERIALS	NVE 8/3/06			
REV	DESCRIPTION	BY / DATE	CCN		
ALL DIMENSIONS ARE IN DECIMAL INCHES TOLERANCES UNLESS OTHERWISE SPECIFIED		THIRD ANGLE PROJECTION ANSI 14.5M		SHOT WEIGHT:	NOTES:
POLYETHYLENE		METAL DECIMAL ± .125" FRACTION ± 1/4" ANGLE ± 1°		SHIPPING WEIGHT:	
±1% @ 68°F				FINISH:	



Den Hartog
INDUSTRIES, INC.

12411 5 X 5 GUSSET
Ace Roto-Mold Injection Molding Blow Molding Sowjoy
4010 HOSPERS DRIVE S. BOX 425, HOSPERS, IOWA 51238-0421

DESCRIPTION	SKID FOR 1300 GALLON LEG TANK	
SCALE	N.S.	PART NO. FS1300-SK